

Project by:



SAMSIDDHI
Springs

2 & 3 BHK Luxury Apartments

@ Thubarahalli, Bangalore

Your Oasis of
Comfort & Convenience



RERA REGD. # : PRM/KA/RERA/1251/446/PR/180924/007030

Your *ideal home* in
vibrant neighborhoods

Samsiddhi Springs is a apartment community designed to offer modern, living spaces that cater to a variety of lifestyles. Located in convenient and vibrant neighbourhoods, Samsiddhi Springs Apartments provides residents with a blend of comfort, style and amenities, making it an ideal place to call home. Samsiddhi Springs provide a perfect blend of comfort, style, and convenience, making them an ideal choice for those seeking a modern and vibrant living environment.





Master Plan

- Legend:**
- 01) Entry / Exit
 - 02) Garbage Collecting Area
 - 03) Transformer / D.G. Area
 - 04) S.T.P.
 - 05) Walking Track
 - 06) Drive Way
 - 07) Gymnasium
 - 08) Multipurpose Hall
 - 09) Swimming Pool
 - 10) Children's Play Area
 - 11) Staircase
 - 12) Lift
 - 13) Water Sump

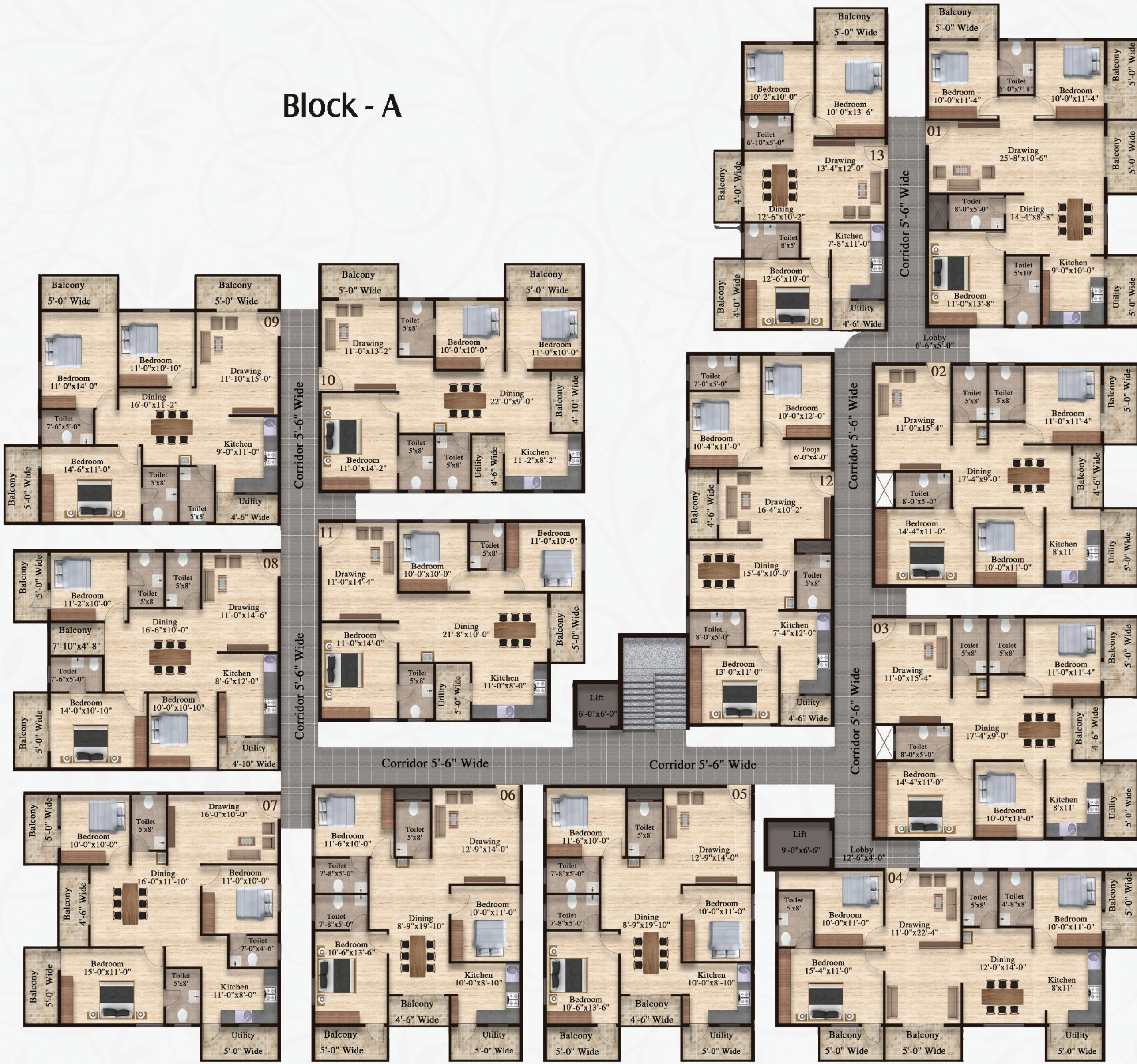


Block - A

Typical Floor Plan (1st, 2nd, & 3rd floors)

Area Statement of Block - A

FLAT NO.	TYPE	SBA IN SFT.	CARPET AREA IN SFT. (Measuring as Per RERA)	BALCONY & UTILITY AREA IN SFT.
01	3 BHK	1676	1057	209
02	3 BHK	1533	1004	152
03	3 BHK	1533	1004	152
04	3 BHK	1671	1066	196
05	3 BHK	1496	986	142
06	3 BHK	1496	986	142
07	3 BHK	1625	1015	213
08	3 BHK	1529	968	182
09	3 BHK	1633	1026	209
10	3 BHK	1545	973	191
11	3 BHK	1394	954	93
12	3 BHK	1474	1025	78
13	3 BHK	1319	825	164



Block - B



Typical Floor Plan (1st, 2nd, & 3rd floors)

Area Statement of Block - B

FLAT NO.	TYPE	SBA IN SFT.	CARPET AREA IN SFT. (Measuring as Per RERA)	BALCONY & UTILITY AREA IN SFT.
01	3 BHK	1609	1027	188
02	3 BHK	1538	1027	133
03	3 BHK	1293	861	112
04	3 BHK	1670	1054	210
05	3 BHK	1505	1009	124
06	2 BHK	1103	704	121
07	2 BHK	1288	866	106
08	3 BHK	1659	1006	247
09	2 BHK	1283	802	164
10	2 BHK	1135	797	52
11	2 BHK	1108	754	75
12	2 BHK	1253	760	181



Isometric Views



Block - A
Flat - 01
Facing: West
Type: 3 BHK



Block - A
Flat - 08
Facing: East
Type: 3 BHK



Block - A
Flat - 04
Facing: North
Type: 3 BHK



Block - B
Flat - 09
Facing: West
Type: 2 BHK



Amenities & Features

Children's Play Area

Swimming Pool

Gymnasium

Walking Track

Multipurpose Hall

STP

DG Power backup

Rain water harvesting

Round the clock Security

CC TV surveillance

Specifications



Structure
RCC framed Structure.



Walls
6" thick Cement solid blocks for exterior walls & 4" thick Cement solid blocks for internal walls.



Windows
UPVC Windows with Mosquito mesh and MS safety grills. For toilet ventilators, Aluminum or UPVC ventilators with MS safety grills.



Kitchen Platform
Granite slab with Stainless Steel sink faucet, and 2' height tile dado on cooking platform.



Doors
Main Door Teak wood frame with Moulded panel or flush shutter & for Internal doors Salwood frame or LVL profile wrapped frame or equivalent with moulded panel shutters or flush shutters .



Lift
KONE/OTIS/schindler or equivalent make lift of suitable size & capacity.



Painting
Asian or Equivalent emulsion paint for interiors & exterior paint for exteriors.



Electrical Work
Concealed wiring with good quality switches & sockets. AC point for All Bedrooms, Aqua guard, washing machine, Geyser & Chimney points. TV Points in Living & Master Bedroom.



Flooring
Vitrified tiles for entire flat & Ceramic tiled flooring for Utility & Balcony



Toilet Flooring
Ceramic tiled flooring & Tiles dado upto door height.



Sanitary
Good quality CP fittings & sanitary ware.

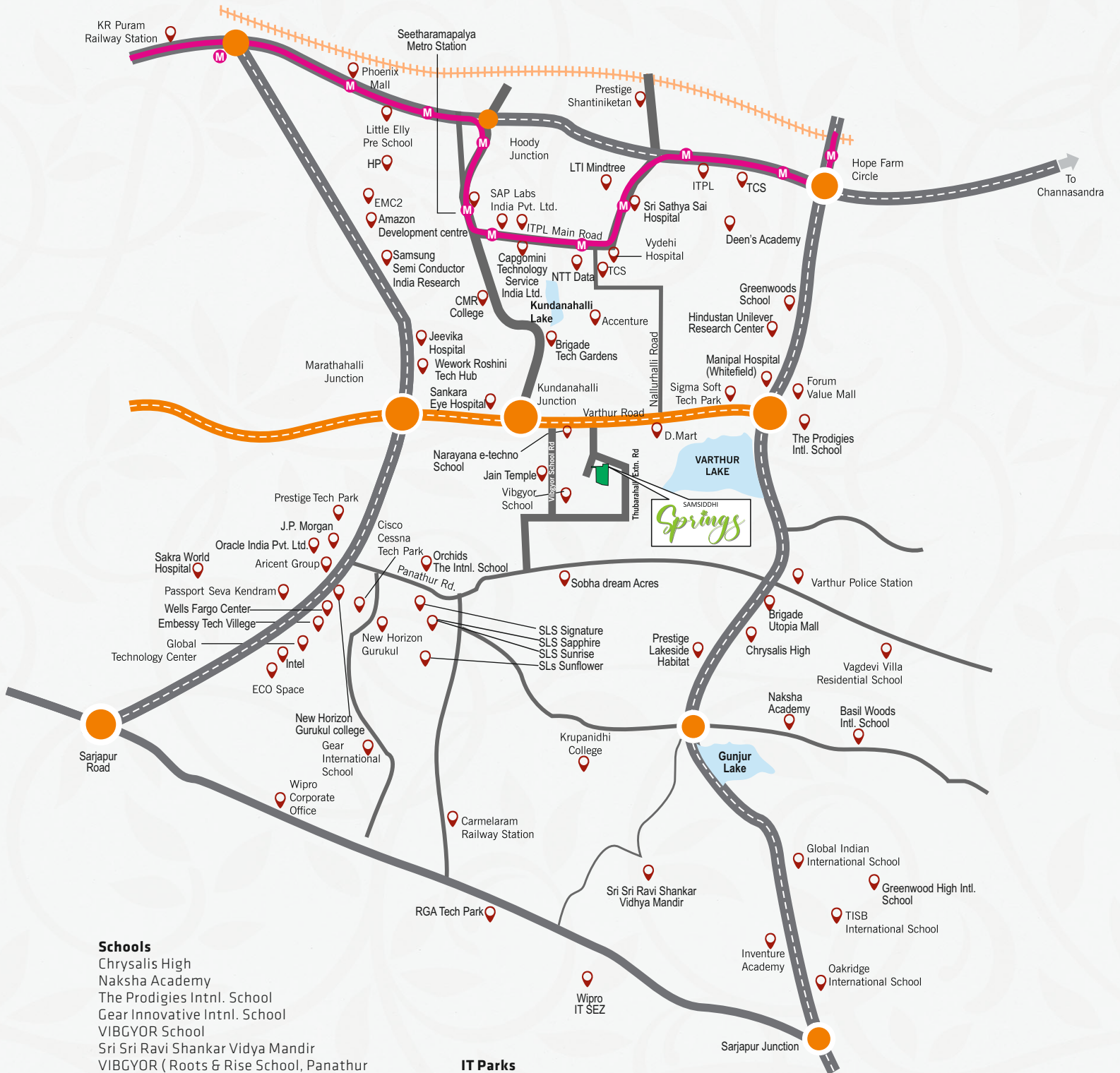


Power Backup
Generator for Lift, Motors & Common area lighting, 1 KVA Power backup for each flat. (Lights, fans, TV & Refrigerator points)



CCTV
CCTV Surveillance

Location Map



Schools

- Chrysalis High
- Naksha Academy
- The Prodigies Intl. School
- Gear Innovative Intl. School
- VIBGYOR School
- Sri Sri Ravi Shankar Vidya Mandir
- VIBGYOR (Roots & Rise School, Panathur
- Deens Academy
- Global Indian Intl. School
- Green Wood High
- Oakridge Internal School
- TISB (The Intl. School), Bangalore
- Vagdevi Vilas School
- Inventure Academy
- Krupanidhi College
- New Horizon Gurukul
- Basil Woods
- Orchids The International School

IT Parks

- Embassy Tech Village
- Cisco
- Eco Space
- Wipro Head Oce
- Intel
- Oracle India
- Cessna Business Park
- Accenture
- Prestige Tech Park
- Sigma Soft Tech Park
- ITPL

Hospitals:

- Sankara Eye Hospital
- Manipal Hospital (Whitefield)
- Jeevika Hospital
- Sri Sathya Sai Hospital
- Vydehi Hospital

SCAN QR CODE



FOR LOCATION

Project by:



SAMSIDDHI DEVELOPERS

Sy. No.34/2, Thubarahalli,
Near UKN Esperanza Apartment
Bangalore - 560 066.

E-mail: samsiddhidevelopers@gmail.com
Web: www.samsiddhidevelopers.com

Mobile: 9606934199
9606934189

Architects & Engineers:

S'n'S ASSOCIATES

Architects & Engineers

Office: 3rd Floor,

80/1, Satwi clarinet Building,

Opp.: Sunshine Public School,

Horamavu Road, Bangalore - 560 043.

RERA REGD. # : PRM/KA/RERA/1251/446/PR/180924/007030